

March 12

2020

Term 1 Week 7

Waiheke High School Newsletter



Kia ora koutou,

Easter is soon upon us and we are now half way through Term 1, 2020. We have run a successful athletics sports day and last Friday we had our annual beach sports competition with Rangitoto being the victorious house. Thank you to those parents who came along and enjoyed the spectacle; it was fantastic to see this number growing and perhaps next year we can recruit some of you onto the staff team tug-of-war against the year 13 students. The staff decisively lost this year!

Thank you for your feedback around COVID-19 and we will continue to update you about any changes. The Ministry of Health and Ministry of Education websites provide a lot of useful information but if you feel unsure please do not hesitate to contact Maggie Lethwaite, our school nurse.

Although we have published our provisional and draft NCEA results for 2019, we will communicate our final results in the next newsletter.

Waiheke WISE has continued to be in the forefront of our school culture. WISE stands for Whanaungatanga, Independence, School Culture and Excellence. We have spent the last three weeks focusing on Whanaungatanga—the sense of belonging, our school family and community and team. Currently, we have been focusing on Independence, or managing ourselves. This has included wearing school uniform correctly and with pride, getting enough sleep and exercise, being punctual, getting organized for class and being safe and keeping safe while using digital devices. Our students are doing themselves proud the Waiheke Wise way.

This term we farewell Matthew Jacomb, Kevin Wilson, Christy Ralphs and Maree Baylee from our staff. Matthew will head over to the UK for further O.E., Kevin heads to Tikipunga High School as Head of Mathematics and his wife, Maree, will be going with him and Christy Ralphs will be spending more time on her many endeavors. We thank them for their hard work and dedication to Waiheke High School.

Our Kahai Ako, WaiCol, has met twice this term and our continued collaboration with Te Huruhi Primary and Waiheke Primary continues to grow. This is set to be another exciting year.

The Prefect team has already established itself well and our form captains/whanau leaders have been elected.

A huge congratulations must go to Kelly Bickerton and the Robotics Club who were 6th out of 64 teams in the Senior National competition. Well done!

Our new school building is slowly drawing to a close and the refurbishment of existing buildings is planned to start in the beginning of Term 2. This will include a new Tuck Shop, Food Room, Learning Diversity Area, a new Science laboratory and Deans Office. Thank you for your patience.

Nga mihi nui,

Jude Young, Principal



Next meeting of Friends of Waiheke High School is 18th March, 6pm to 7pm in the Board Room—all welcome.

Waiheke High School Quiz Night—8th August, 2020—save the date!

The next Board of Trustees Meeting is scheduled for Wednesday 1st April 2020, 6:00pm in the Waiheke High School board room

Term Dates

26 Mar Parent/Teacher Night

10 Apr GOOD FRIDAY—END OF TERM 1

27 Apr

28 Apr

ANZAC DAY

FIRST DAY OF TERM 2

From the Visual Arts Department



In partnership with the Visual Arts Department at Waiheke High, the Waiheke Community Art Gallery is sponsoring a new initiative to encourage more of our students to get involved in the gallery and showcase their work. Through a new scheme of Junior Memberships with the cost based on age. They are interested in supporting students' artistic endeavours and would like to offer a special membership incentive for Waiheke High School students.

WHAT YOU GET

Membership to the gallery offers you opportunities to exhibit in selected open exhibitions through the year. Coming up in May we have Jostle featuring small works, in July we have The Members Show and in November there is Reclaim to Fame which requires the work to be made from 80% recycled materials. There may well be other opportunities as the year goes on. You will be made aware of these by e-mail receiving updates from our artist liaisons, Katie Trinkle Legge and Daisy Saaiman.

HOW TO DO IT

Come into the gallery, maybe with a buddy and sign up. We'll get a few details from you and ask you to pay according to your age. If you're 13 you pay \$13—14 you pay \$14—15 you pay \$15—16 you pay \$16 and 17 you pay \$17. Normally student memberships are \$35 so significant savings here for you and as an extra incentive you get a few extra months with expiry 31 June 2021. Please contact us if you have any questions. We look forward to meeting you soon.

The Team at Waiheke Community Art Gallery

info@waihekeartgallery.org.nz

WAIHEKE COMMUNITY ART GALLERY INC

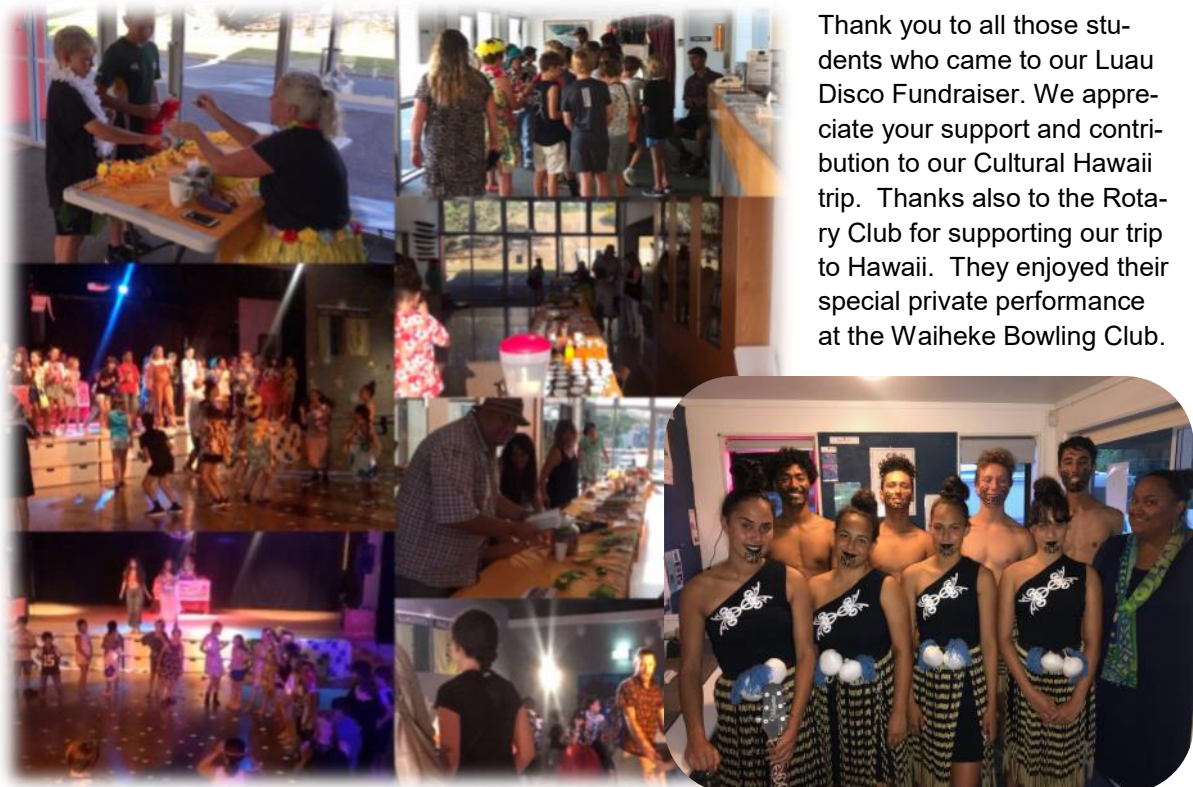
Te Whare Taonga O Waiheke

2 Korora Road, Oneroa, Waiheke Island 1081 ph (09) 372 9907

director@waihekeartgallery.org.nz

www.waihekeartgallery.org.nz

Piringakau Hawaii Fundraising



Thank you to all those students who came to our Luau Disco Fundraiser. We appreciate your support and contribution to our Cultural Hawaii trip. Thanks also to the Rotary Club for supporting our trip to Hawaii. They enjoyed their special private performance at the Waiheke Bowling Club.

Athletics Day 2020

The annual Waiheke High School athletics day took place on Friday 14th February. Despite the scorching weather, attendance was high and the participation was fantastic. Students from Year 7 right through to Year 13 competed in a range of track and field events including shot, javelin, discus, long jump and high jump. The day finished with a tightly contested staff vs prefect race. Overall, Ponui won the day with 2041 points. Rangitoto was 2nd with 1991 points, Rakino 3rd with 1814 points and Pakatoa finished 4th with 1673.



Well done to Rangitoto for gaining the most participation points on the day. A special mention to Seren Coughlan for breaking the 13 year old girls discus record with a throw of 24.09m.

Beach Sports 2020



Congratulations to Rangitoto for a great win at this year's Beach Sports. Second was Ponui, then Pakatoa and Rakino. A wonderful occasion as always!

Important Message about Cyber-Safety

Dear Parents/Caregivers,

We are writing to you as recently in the newspaper there have been a number of articles about teenagers and cyber safety particularly in relation to cyberbullying, pornography and teens accessing graphic content.

As a school we should address these issues especially as in the research highlighted in the articles tell us that two thirds of 14 – 17 year olds have been exposed to pornography or graphic violence and 1 in 4 have seen pornography before the age of 12 – either accidentally or having been shown it by someone else. Also a NZ Nielsen survey done for the Graeme Dingle Foundation, found that 61 per cent of New Zealanders aged 13 to 24 have received sexually explicit content such as photos, videos and links to explicit content via social media and Two-fifths (42 per cent) admit that they have used social media to send such material to others.

Netsafe do say there is a place for the use of filters and checking the on line life of your child, though these can be passed with the use of other devices or when they are away from home. Also as they get older they will want more privacy and independence and the advice is education around your family values and about cyber safety is this most important thing you can do.

What might a conversation look like and what could be addressed.

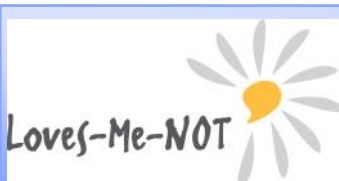
- It is important that the conversation around their online and offline life does not assume that one is more real than the other. If the teen thinks their online life is somehow less real, then they may think there are not the same consequences online and anything goes
- Cyber safety, bullying, pornography and their relationships online need to be discussed in relation to values – self-worth, empathy, self-control not just about the technology and filters. When talking to teens/tweens about issues online use a non-technological example-e.g if they were in a park would they go off with someone who they had only had a conversation/s with or send personal images of themselves. Most would say no. Then why would they go off to a private chat room with someone on line that they had only talked to, or send personal images and they don't necessarily know who they are.
- Teach children how to engage with the people they meet on line (even if they know them)- not to answer personal questions, send personal images of themselves, not to open links sent to them or go off with people to private chat rooms which some games also have. Some graphic content violence or porn can be accessed via adverts or even a google search, some content may be real or illegal – if they are curious get them to ask you/adult before opening links/adverts.
- Anti-social behaviour is anti-social behaviour offline or online.
- If they wouldn't do something or behave in a certain way offline, then they shouldn't do it online.
- If your child has seen something that has made them feel uncomfortable or has been graphic in nature either pornography or violence, then you may want them to seek some professional help and if illegal contact the police.
- **Need to talk? Free call or text 1737 any time for support from a trained counsellor**
- [Lifeline](https://www.lifeline.org.nz/) – 0800 543 354 (0800 LIFELINE) or free text 4357 (HELP)
- [What's Up](https://www.whatsup.org.nz/) – 0800 942 8787 (for 5–18 year olds). Phone counselling is available Monday to Friday, 12noon–11pm and weekends, 3pm–11pm. Online chat is available from 3pm–10pm 7 days a week, including all public holidays.
- Watching or seeing pornography can influence how young people view relationships and some teens/tweens are “learning” their sex education via the internet. The school does address these issues through the health programme and programmes like Mates and dates but their conversations with you around these issues will have a major influence on them.

Some useful websites Netsafe

- ⇒ Online bullying <https://www.netsafe.org.nz/bullying-abuse-support/>
- ⇒ How to create an online safety plan <https://www.netsafe.org.nz/make-a-plan/>
- ⇒ How to talk to your child about porn <https://www.netsafe.org.nz/porn-advice-parents/>
- ⇒ Netsafe general site <https://www.netsafe.org.nz/>
- ⇒ The light project (pornography) <https://thelightproject.co.nz/>

We hope this will help with this complicated issue.

Jude Young (Principal) and the Pastoral Team



Each year Police Education Officers work with our Year 12 students on the "Loves Me Not" programme. This full day workshop focuses on relationships and consent. This year it will be held on Tuesday 17 March and will involve all our year 12 students for the full day. Any questions can be directed to Tony Sears, searst@waihekehigh.school.nz.

Career Dates for 2020

Careers Evening (Tuesday 30 June):

Parents/caregivers and students Year 10 -13 invited.

Career Taster Days:

Students try out a job of interest for a day.

Year 13 = Tuesday 23 June

Year 12 = Wednesday 24 June

Career Awareness Days:

Self-assessments, career research, speakers, CV building and networking.

Year 11 = Monday 22 June

Year 12 = Tuesday 23 June

Year 13 = Wednesday 24 June

Scholarship Information Session (Week 2, Term 2):

After this, write applications during Term Two and holidays.

Applications generally open the start of Term Three. Cut off dates vary for different scholarships.

Halls of Residence Information Session (Week 2, Term 3):

Halls of Residence Applications open August 1st until September 15.

Apply online. You usually need a reference form (CCRF), apply for this online.

Some places accept applications later than this.

Subject Selection Day (Wednesday 9 September - periods 1-3)

Year 10 students. Information about growth industries. Opportunity to discuss career ideas and relevant subjects with deans, HOFs and career advisors.

Loans and Allowances Information Session (Week 8, Term 3):

Find out whether you are eligible for loans and allowances, how to apply and get started.

University Open Days (May-Sept):

| | |
|--------------------------------|----------------------------------|
| Auckland | 29 August |
| Otago (days) | 3 Sunday + 4 Monday May |
| Otago (evening in Auckland) | 16 June 7pm |
| Waikato | TBC May |
| Canterbury | 8 + 10 July |
| AUT | 29 Aug OR you can attend: |
| -AUT On Campus Exp | TBC July (City Campus) |
| -AUT ICT+ Engineering Fair | 3 April |
| Lincoln | 17 July |
| Massey (Albany) | 22 Aug |
| Massey (Palmerston North) | 5 Aug |
| Massey (Wellington) | 21 Aug |
| Victoria (day) | 21 Aug |
| Victoria (evening in Auckland) | 23 June |
| Auckland (Epsom Campus) | June |
| Unitec | 5 Sept |
| MIT | Experience days (details online) |

Polytechnic Applications Open (1st August)

Apply online.

University Applications (1st December)

Many tertiary courses open in August (especially music, dance and art programmes where auditions or portfolios are required).

Apply online.

Course planning/advice days at providers (Jan/Feb)

Students in Year 13 will have a career interview during Term One. A summary of this interview will be emailed home.

Tanique Deacon, Careers Adviser
deacon@waihekehigh.school.nz

Waiheke High School Fine Art Show 2021

The Inaugural Waiheke High School Fine Art Show will take place from 12-14 March 2021

Tim Kay, Director of Fundraising and Marketing at Waiheke Island High School says "Waiheke Island is home to an extensive community of artists and it is only appropriate that Waiheke High School hosts their very first Fine Art Show which will showcase a compelling collection of artworks from over 100 leading and emerging New Zealand Artists. Our talented student artists will also play an integral part in the show. "

Some of the artists already committed to exhibit include Chris Bailey, Dennis O'Connor, Barbara Robinson, Katie Trinkle-Legge, Caro Becroft, Gabriella Lewenz, Belinda Fabris, Daisy Saaiman and Ingrid Berzins

"The Waiheke High School Fine Art Show is very grateful of the support of its sponsors with Perpetual Guardian as the major sponsor of the event along with the generous support of Barfoot & Thompson and Stay Waiheke. Without their generosity this event would not be possible, " says Tim Kay

A well connected and experienced organizing committee has been put together to organize the inaugural art show including Anne Simoni, Jackie O'Brien, Gabriella Lewenz, Linda McKelvie, Peter Rees, Daisy Saaiman, Belinda Fabris, Michelle Barber, Jackie Havercroft and Tim Kay

The Art Show will celebrate the vitality and vibrancy of the arts and the flow on benefits art provides Waiheke Island students and wider community.

The Fine Art Show will be diverse, inspirational, innovative and refreshing. The artworks on display will include original paintings, prints, photography, sculpture, ceramics and glass. All the artworks being exhibited will be available for purchase, there will be something for everyone

Proceeds from the event will go towards the new Visual and Performing Arts Centre at Waiheke High School, providing Waiheke Island students with state-of-the-art facilities of the highest calibre, allowing them to perform with the highest level of professionalism as well as enhancing their educational experiences.

Funds from the event will also go towards establishing an artist in residence program at the school. This is an opportunity for well-known artists to share their skills and perspectives with the students and to help them to experiment with their creativity and gain confidence in expressing themselves.

The show will open with a special gala evening on Friday night the 12th March and then open free- of -charge to the community on Saturday and Sunday.

Tim Kay

Director of Fundraising and Marketing,
Waiheke High School



Summer Shakespeare performances outside are a worldwide phenomenon, experiencing the bard in an outdoor setting creates an evening of authentic entertainment and enchantment.

Bringing our version of this well beloved format to life, Waiheke High School Senior Drama present 'Shakespeare in the Garden'

Tuesday 24 March

B Block Courtyard

6pm Start

Koha/ Gold Coin entry

BYO picnic and blanket

Strictly alcohol free event

Let senior drama students entertain you with a selection of scenes from a diverse range of Shakespeare's finest plays. We invite the audience to bring a blanket to sit on, a picnic to eat and a willingness to be transported back in time to the Elizabethan Theatre of the Globe as we re-create the atmosphere and magic of the time.

Any further info required please contact Vanessa Carnevale

carnevalev@waihekehigh.school.nz



Waiheke High School would like to thank the following businesses and individuals for their ongoing support :

Fullers - Travel

Sealink - Travel

Waiheke Rotary Club - Science/Robotics

Countdown Supermarket - Matariki

Gulf Foods - Matariki

Humble Pie Village Butcher & Deli- Matariki

Waiheke Local Board—Bronze Award

Contact us:

Principal:

Jude Young

Senior Management:

Tony Sears

Paul Knighton

Trudie Jamieson

11 Donald Bruce Road, Surfdale,
Waiheke Island.

Phone: 09 371-9000

Fax: 09 372-5474

E: enquiries@waihekehigh.school.nz

Web: www.waihekehigh.school.nz

Fullers 360 Wharf Wharf

Run, Walk & Carnival

Waiheke Island, Saturday 14th March, 2020



Register online now, for
42km, 25km, 12km or 5km
Enter online at
wharf2wharf.co.nz



Proudly supported by:



Wharf to Wharf Saturday 14 March

Sign up for this year's event at www.wharf2wharf.co.nz/ For Waiheke High School students a 25% discount is being offered—when booking, use the code "HighSchool"

- 5 different run/walk options available - Marathon, 25k, 12k, 5k and kids dash
- Each 5k adult entry receives a free child entry
- Exciting carnival at Matiatia reserve including circus skills, face painting and sausage sizzle.
- Lots of prizes to be won
- BBQ, food stalls, coffee and ice cream

